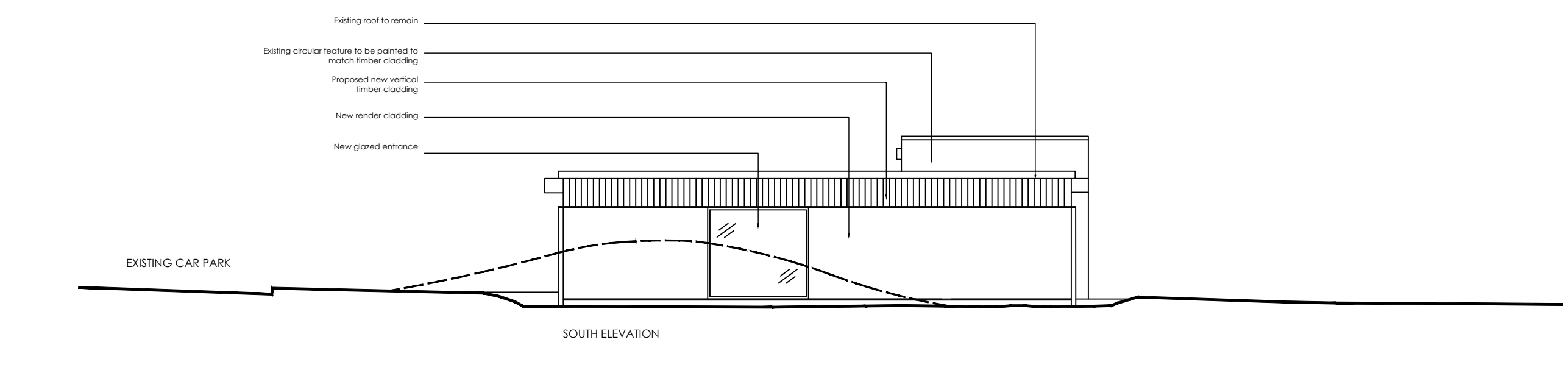
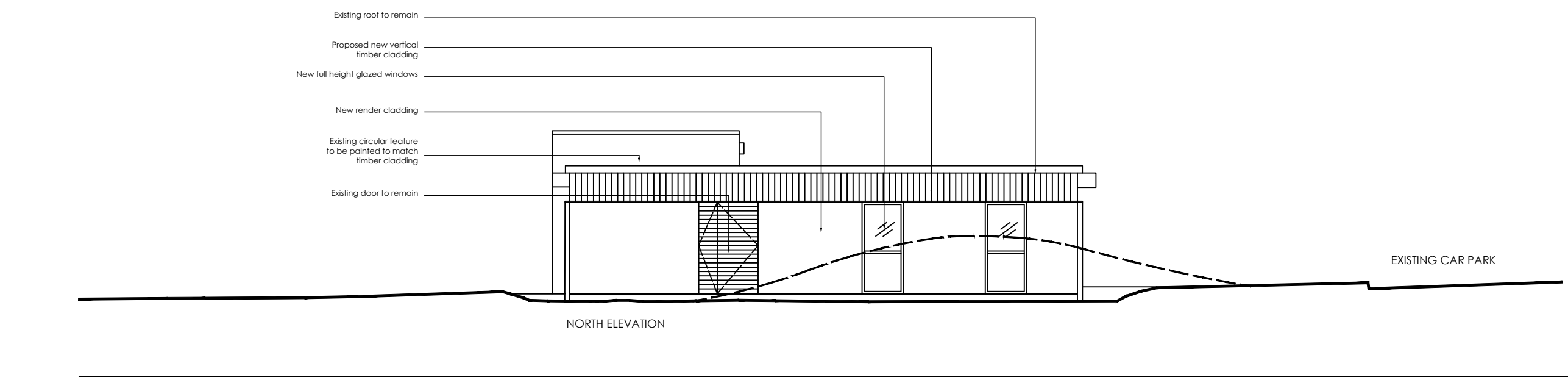
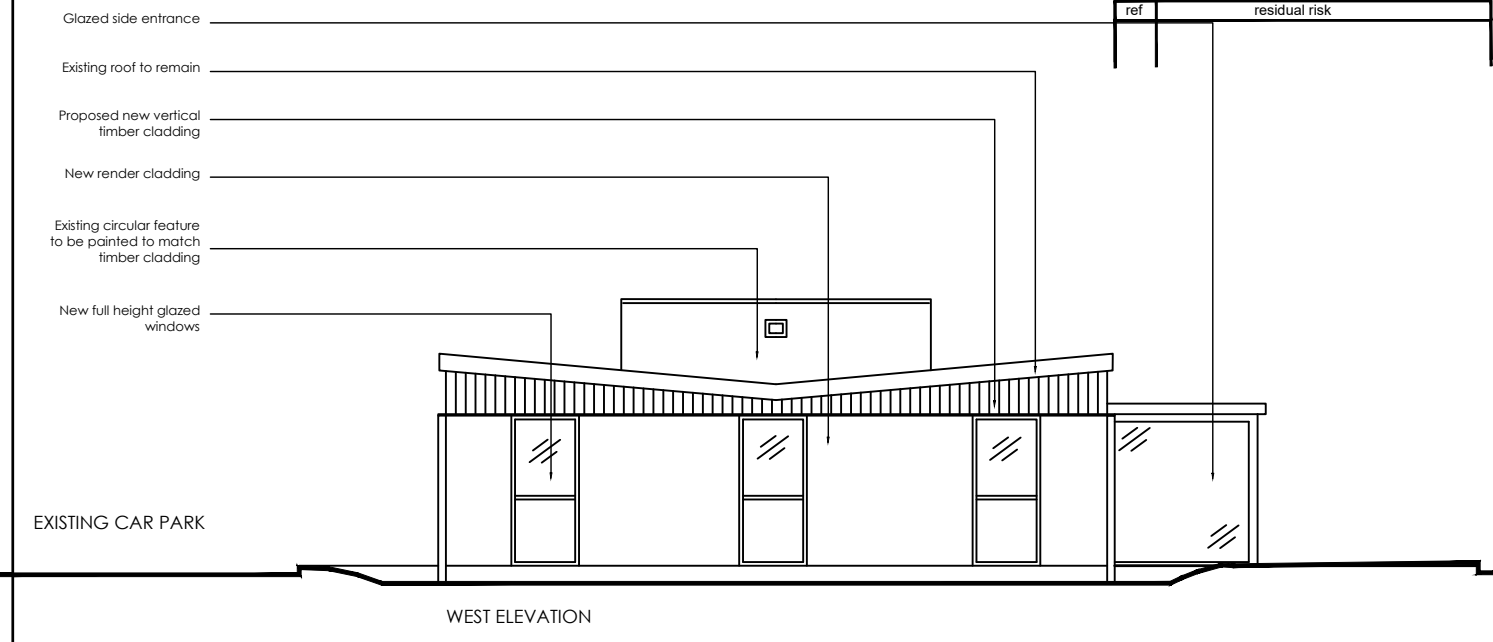
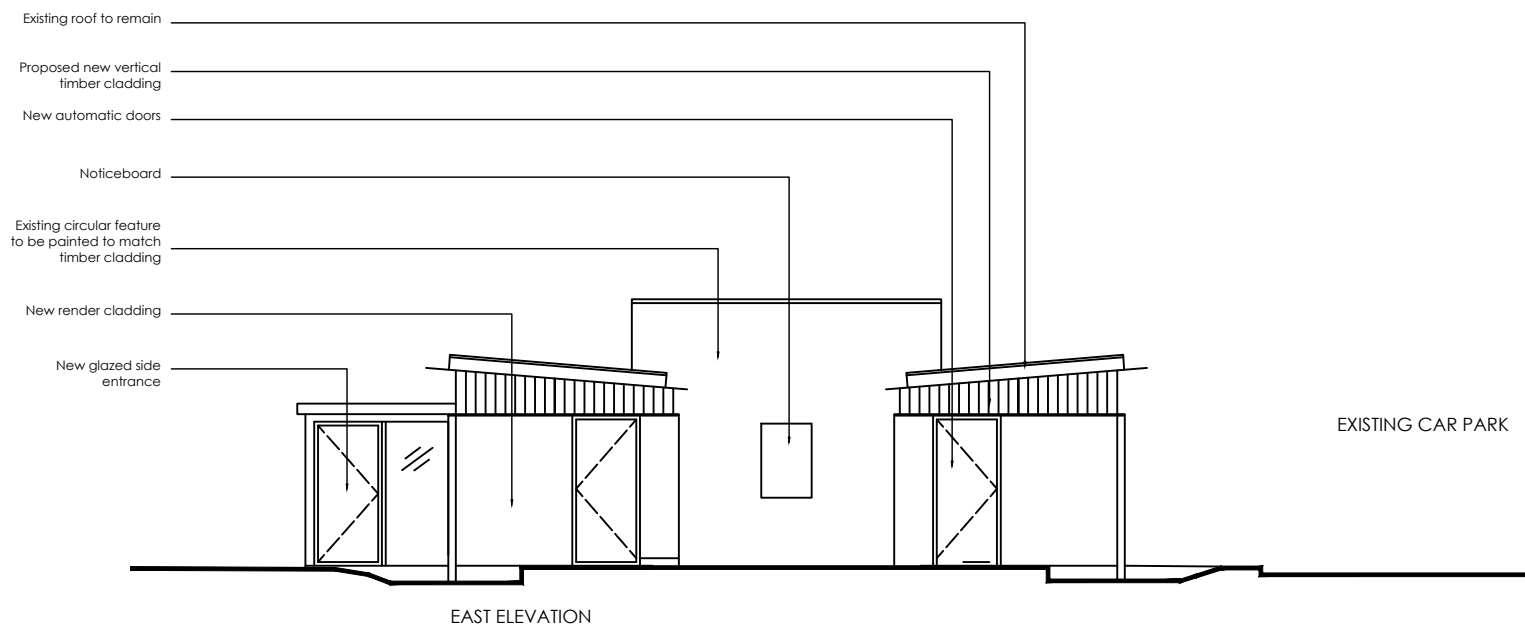


Construction staff and operatives must ensure the principal contractor has provided thorough and accurate information on all health and safety aspects relating to the designs identified on this drawing including the review of:

- Designers/contractors risk assessments
- Method statements
- Permit to work
- Pre construction information

The designers note that the following health and safety risks relating to this drawing have not been eliminated during the design process:

| ref | residual risk |
|-----|---------------|
| | |



| revision | date | by | chk |
|----------|------|----|-----|
| | | | |

All dimensions to be verified on site and the Architect informed of any discrepancy. All drawings and specifications should be read in conjunction with the Health and Safety Plan; all conflicts should be reported to the appointed Principal Designer.
 This drawing is the Property of Bowman Riley Architects Limited ©
 DO NOT SCALE FROM THIS DRAWING

- preliminary
- comment
- construction
- planning
- tender
- record

BOWMAN RILEY ARCHITECTS
 Toronto Square - Toronto Street - Leeds - LS1 2HU
 Leeds | London | Skipton
 0113 391 7570 · www.bowmanriley.com

BINGLEY TOWN COUNCIL

| | | | |
|----------|------------|------------|------------|
| drawn by | checked by | date | scale @ A1 |
| RS | DG | 13.02.2019 | 1:50 |

PUBLIC TOILETS, MYRTLE PLACE BINGLEY

PROPOSED ELEVATIONS

| | | |
|----------------|----------------|----------|
| project number | drawing number | revision |
| 2043 | SK03 | - |

cad reference: U1_P-2043 - Bingley Toilets - PM2043 - Project Files\Planning Drawings\Myrtle Place Bingley.dwg